

The Winter's Talent

Team Name:

Team Members:

A Puzzle In Three Acts
by Dustin Foley

Welcome to the puzzle portion of today's talent show! Each of the three act-themed puzzles will lead you to a ten-letter word. You'll need to use the ten-letter words from those puzzles in order to solve the final puzzle. Whichever person or team finishes the largest portion of these puzzles first will win a prize. Enjoy the show!

JUGGLING

How long can they keep it up without dropping a ball in the middle of their act?

Match up the starting routines to the ending routines, being sure to always keep your eye on the **ball**.

Starting Routines

Ending Routines

⑧ Verbal fracas
ARGUMENT

Grade better than an eff
DEE

S P I T

⑨ Hosted a traditional summer
gathering
BARBECUED

She has a brood
HEN

E I G H T

⑨ Quite charming and sophisticated
DEBONAIRE

Evil creatures of Middle-earth
ORCS

H A R D

⑦ Regardless of
DESPITE

Hearty sip of a drink
SWIG

P I N

⑪ Little Red Riding Hood character
GRANDMOTHER

Like wire for some enclosures
BARBED

C U E

⑧ Increase, as tension or senses
HEIGHTEN

Nationality in a Michael Jackson song
LIBERIAN

T A R

⑪ Ron Paul or Penn Jillette,
ideologically
LIBERTARIAN

" ___ you a little short for a
stormtrooper?"
AREN'T

G U M

⑧ Locations for picking
ORCHARDS

Do a certain step in preparing
fish or chicken
DEBONE

A I R

⑧ Seep into and throughout
PERMEATE

Even more enormous and ornate
GRANDER

M O T H

⑦ Quickly pilfering
SWIPING

___ Noël (France's Santa)
PERE

M E A T

ANSWER: P E R P E T U A T E
A-1 A-2 A-3 A-4 A-5 A-6 A-7 A-8 A-9 A-10

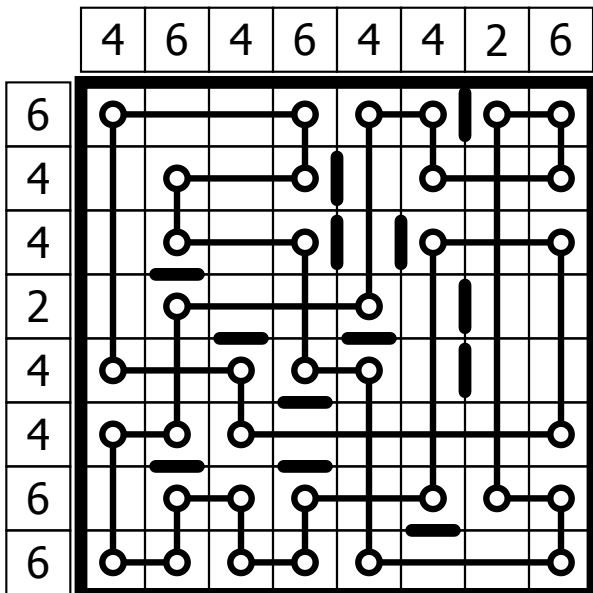
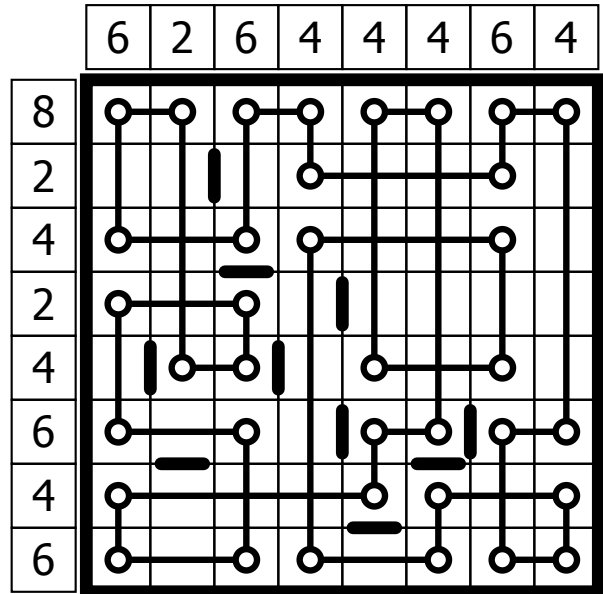
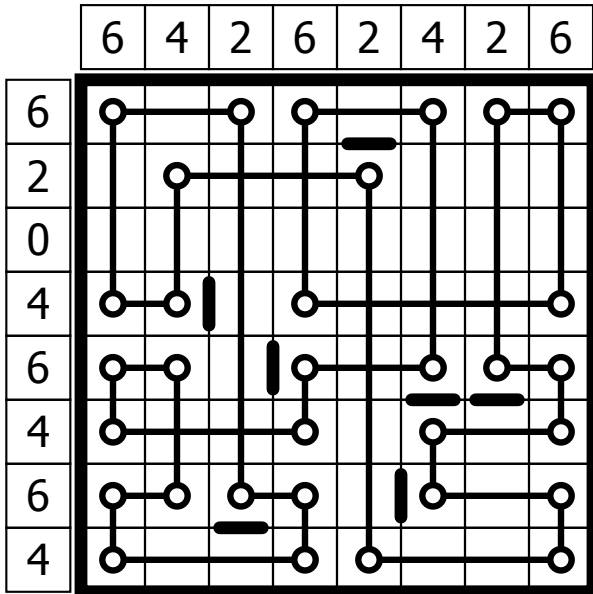
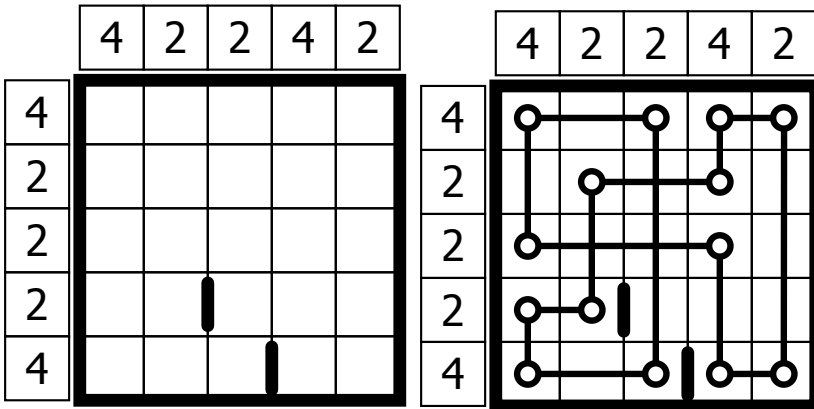
STRING INSTRUMENTS

It's easy to get tied up in the nobility of the violoncello, the grandeur of the grand piano, and other cords that make chords.

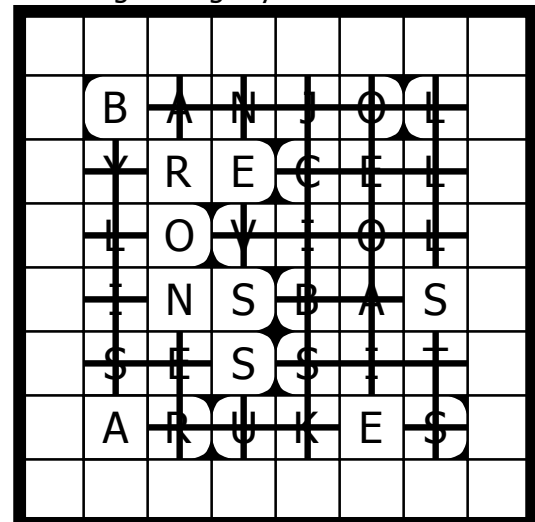
Each grid holds one string and a group of pegs, according to these rules:

- The string is a single, closed loop that visits every square at least once, only traveling horizontally and vertically.
- The string can only go straight until it hits a peg, at which point it MUST make a 90 degree turn.
- The string may visit a square twice, but only if it crosses itself, traveling straight in both directions (that is, the square can't have a peg).
- Numbers around the grid indicate the total number of pegs in that row or column.
- The string cannot pass through any thick bars.

EXAMPLE



Finally, **cross** off the appropriate letters in this grid to get your 10-letter word.



ANSWER:

B A R O N E S S E S
 B-1 B-2 B-3 B-4 B-5 B-6 B-7 B-8 B-9 B-10

SINGING

Song birds of a feather flock together; sometimes it's easier as a duet.

ACROSS

- 1 Tiny bit of paint
- 4 You might see him wearing stripes
- 8 Blocks (off) with police tape
- 14 Renaissance fair drink
- 15 Terrible name?
- 16 Crier's cry
- 17 First half of a very appropriate quote
- 20 Derisive expressions
- 21 Talents
- 22 They're not odds
- 23 Lawn stuff
- 24 Work ____
- 28 Fail a polygraph, maybe
- 29 Bonobo or orang
- 31 Mechanical conveyance
- 32 Judging implement
- 35 Apex
- 36 Composer of the quote
- 40 Shark-sucking fish
- 41 Vacation location
- 42 Tons
- 43 Refusals
- 44 Like Ambrose Bierce's humor
- 47 ____ noir
- 49 Had some grub
- 51 Shakespearean pronoun
- 52 Shrek's love
- 54 Type of melon
- 56 Second half of a very appropriate quote

D	A	B		W	A	L	DO		C	O	R	DO	N	S	
A	L	E		I	V	A	N		H	E	A	R	Y	E	
M	U	S	I	C	I	S	T	H	E	S	P	A	C	E	
S	M	I	R	K	S		G	I	F	T	S				
E	N	D	S			S	O	D		E	T	H	I	C	
L	I	E		A	P	E				A	U	T	O		
				G	A	V	E	L		C	R	E	S	T	
		C	L	A	U	D	E	D	E	B	U	S	S	Y	
RE	M	O	R	A		RE	S	O	R	T					
A	L	O	T					N	O	S		W	R	Y	
P	I	N	O	T		A	T	E			T	H	E	E	
				F	I	O	N	A		C	A	S	A	B	A
B	E	T	W	E	E	N	T	H	E	N	O	T	E	S	
U	N	S	A	I	D		A	U	N	T		A	L	T	
Y	E	A	R	N	S		MI	N	T	S		MI	S	S	

DOWN

- 1 Distressed individual, perhaps
- 2 They're called for donations
- 3 Bordering
- 4 Candle component
- 5 Hertz competitor
- 6 Vegas starter
- 7 "Please, stay!"
- 8 South Park character, or his occupation
- 9 90° clockwise from sur

- 10 Biggie, Diddy, and others
- 11 Adventurous girl on TV
- 12 MoMA loc.
- 13 Witness
- 18 Org. with an annual deadline
- 19 Squirreled away
- 23 Extreme
- 25 Shades
- 26 Small, as a spider
- 27 Simple place to sleep
- 29 Oaxacan water
- 30 Cushion
- 33 Wood and Sullivan
- 34 Sierra ____
- 35 Takes out
- 36 CCCXVII x III
- 37 Nut job

- 38 Ancient military treatise, with "The"
- 39 Dawg
- 40 Use a scythe
- 44 Words before chopped liver
- 45 They rise up
- 46 They make things rise up
- 48 Video game based on a movie, e.g.
- 49 ____ Arbor
- 50 Mat in Japanese rooms
- 51 General on Chinese menus
- 53 Heavy reference books
- 54 Copper shield site, as of 2010
- 55 Farm residents?
- 56 Trade money for
- 57 WSW's opposite
- 58 Gp. with X-rays
- 59 Fifth-century pillager

ANSWER:

C
O
R
M
O
R
A
N
T
S

C-1
C-2
C-3
C-4
C-5
C-6
C-7
C-8
C-9
C-10

METAPUZZLE: THE LINEUP

First, put the letters of your three ten-letter words into their respective boxes at the left, as indicated. Then, place each trio of boxes in one of the ten positions in the arrangement at the right. Which trio belongs in which position is for you to determine, but the order of letters within a trio will not change, and two trios have been placed for you already. When all spaces have been correctly filled, five words of equal length can be read across the rows. You'll then have the answer to the riddle below.

A-1 B-4 C-8
P O N

A-6 B-3 C-7
T R A

A-2 C-4 B-8
E M S

B-10 A-7 C-6
S U R

B-9 C-5 A-3
E O R

A-8 B-1 C-10
A B S

C-2 A-4 B-6
O P E

C-3 B-2 A-9
R A T

C-1 A-5 B-7
C E S

A-10 B-5 C-9
E N T

TH

E O R E M S

EX

P O N E N T

S U R

FA

C E S

A B S T R A

CT

O P E R A T

OR

What do some talented mathematicians have?

ANSWER: THE X FACTOR

SCORING

JUGGLING

Complete matches ___ x3 = ___/30

Letters in final answer ___/10

Total ___/40

STRING INSTRUMENTS

Correct grids ___ x10 = ___/30

Letters in final answer ___/10

Total ___/40

SINGING

Correct rows ___/15

Correct columns ___/15

Letters in final answer ___/10

Total ___/40

THE LINEUP

Correctly filled trios ___/10

Correctly placed trios ___/10

Final answer ___ x10 = ___/10

TOTAL: ___/150